

# INTRODUCING CORIAN<sup>®</sup> QUARTZ

A new dimension  
of surface design



# INTRODUCING CORIAN® QUARTZ

---

A new dimension of surface design

**C**orian® Design will make your space fresh, functional, and can transform a space into an environment that is unique to your tastes. Our brand vision, Corian® Design: Make Your Space™ invites you to meet the Corian® you never knew. Our offerings of Corian® Solid Surface and Corian® Quartz are renowned for the variety of patterns and color schemes, durability and cleanliness that enable you to make an impact with your space. With so many aesthetics and countless functionalities to personalize your own space, experience Corian® Design as you never have before.

Introducing **Corian® Quartz**, formerly known as **Zodiaq®**. Our innovative quartz surface has a whole new look including captivating new aesthetics.



## THE CORIAN® QUARTZ AESTHETICS FOR 2018

Organic and geological in inspiration, guided by design and style directions, the Corian® Quartz introductions for 2018 reflect the natural world at its best. Encompassing modern technology, Corian® Quartz offers aesthetics with visual depth, embraces classic looks, and launches an exciting, new, soft leather texture.

Dramatic veining is well suited to statement making environments, whether a vertical installation or horizontal, and the quiet layering of pattern and color is ideal for creating a sanctuary of design. Bianco Dolomite, Nebula, and Nero Soapstone offer veined options that vary in tone, and finish, but are all stimulating.

Rugged looks with mineral and translucent particles offer expressions of balanced design that specially feature their unique elements, such as Pearl Stone and Black Quasar. The aesthetics of Corian® Quartz create a world unto its own, a world connected to nature, exquisite design, with looks suited to any décor or environment.

The exciting soft leather texture is appearing on the new introductions of Gray Tundra, Grigio Alpi, Quarry Stone, and Nero Soapstone. Merging the beauty of natural stone inspirations with the refinement of tanned leather creates an aesthetic with a subtle surface and distinctive textured finish. The look is timeless and stirs the senses, both visually and to the touch.

With eight new aesthetics, ranging from light to dark hues, and the creation of new textures and sheens, the intricate patterning and designs of Corian® Quartz are exhilarating, and practical, additions to the design landscape.

OPPOSITE: kitchen countertop and cabinet in Corian® Quartz Quarry Stone; reception desk in Corian® Quartz Nero Soapstone and Corian® Quartz Pearl Stone; bathroom wall cladding and sink shell in Corian® Quartz Nebula. Photo Corian® Design, all rights reserved.



# GRAY TUNDRA

Muted and understated aesthetics create a look of quiet beauty. Light gray is infused with white and deeper gray in a randomly flowing pattern while the texture and soft, subtle finish establish a relaxing mood that suits all design styles.



\* LEATHERED TEXTURE

FULL SLAB IMAGE

OPPOSITE: kitchen countertop and cooking area top in Corian® Quartz Gray Tundra, Corian® Bold 966 sink.





# BIANCO DOLOMITE

A white ground conjures brisk air while gray and charcoal diagonal veins create the strong visual dynamic of a mountain range. Bold in visual and execution, this is the perfect entrance surface or for creating a centerpiece of style in any setting.



FULL SLAB IMAGE

OPPOSITE: kitchen countertops in Corian® Quartz Bianco Dolomite, Corian® Simplicity 881 and Corian® Neat 804 sinks.

# QUARRY STONE

Merging brown and gray, a pebbled texture, and soft finish, this pattern adds sinuous veining to complete a look that is natural, as well as a modern neutral. Its mid-range depth acts as an excellent companion to light and dark colors, and either traditional or contemporary design.



\* LEATHERED TEXTURE

FULL SLAB IMAGE

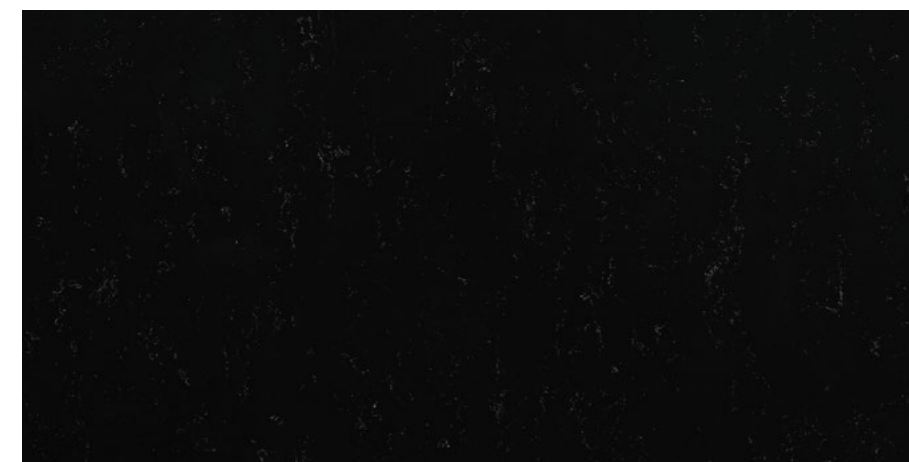


OPPOSITE: kitchen countertop and cabinet in Corian® Quartz Quarry Stone.



## BLACK QUASAR

Suggesting the furthest reaches of deep space, this design layers a black ground with dark elements of near black, and is enhanced with the subtle glistening of metallic elements. At once intriguing, it invites you to delve into its expansive depth.



FULL SLAB IMAGE

OPPOSITE: kitchen countertop and cabinet in Corian® Quartz Black Quasar, customized sink in Corian® Solid Surface.

# NEBULA

Diffuse white veining forms a vapor-like mist over a cool, gray ground, creating a neutral with visual depth. This is a neutral that can make a statement, though, as the pattern's movement makes it ideal for practically any designed space.



FULL SLAB IMAGE

OPPOSITE: wall cladding and sink shell in Corian® Quartz Nebula, customized sink in Corian® Solid Surface Deep Cloud color.







## PEARL STONE

Various solid and translucent particles, and understated veining, enhance a soft gray ground for this aesthetic of refined strength. Light glistens and bounces off the particles and completes a sophisticated take on inspired stone aesthetics.



FULL SLAB IMAGE

OPPOSITE: reception top in Corian® Quartz Nero Soapstone and reception wall panel in Corian® Quartz Pearl Stone.

# GRIGIO ALPI

The medium gray with deep colored veins captures a mood of the city, at once urban and urbane, the leathered, soft texture calls to mind grand boulevards and soaring buildings.



\* LEATHERED TEXTURE

FULL SLAB IMAGE

OPPOSITE: bar top in Corian® Quartz Grigio Alpi and front bar panel in Corian® Quartz Black Quasar.





# NERO SOAPSTONE

The soft finish and subtle texture belie the visual strength of this concentrated, ash colored aesthetic. While making its own intense statement, it can produce an excellent background, as well as enhancing other materials, in the designed space.



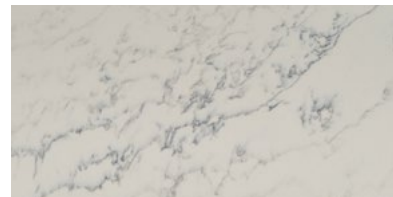
\* LEATHERED TEXTURE

FULL SLAB IMAGE

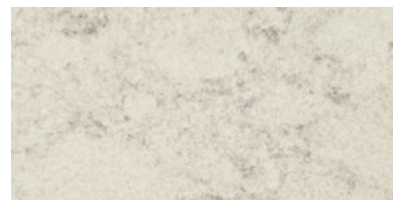
OPPOSITE: tabletop in Corian® Quartz Nero Soapstone.

# THE CORIAN® QUARTZ 2018 COLORS

---



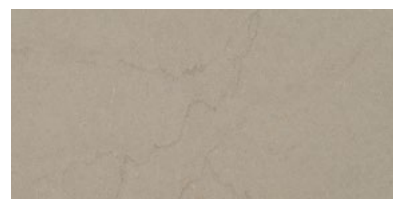
BIANCO DOLOMITE



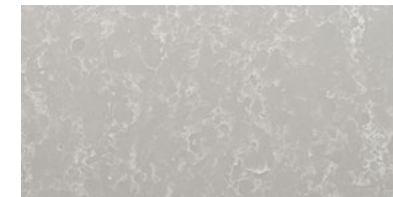
GRAY TUNDRA \*



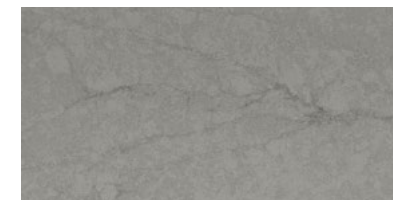
PEARL STONE



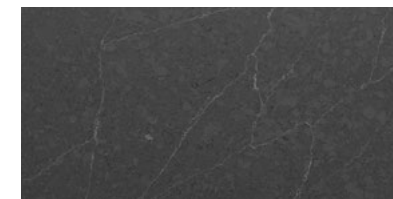
QUARRY STONE \*



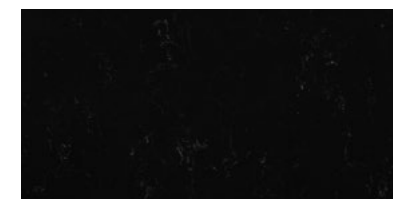
NEBULA



GRIGIO ALPI \*



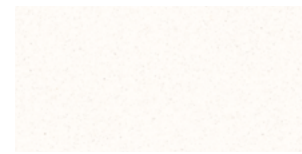
NERO SOAPSTONE \*



BLACK QUASAR

\* LEATHERED TEXTURE

# THE CORIAN® QUARTZ COMPLETE COLOR PALETTE



SNOW WHITE



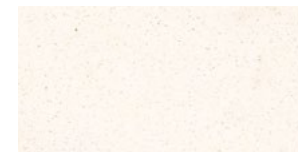
COARSE CARRARA



SNOW FLURRY



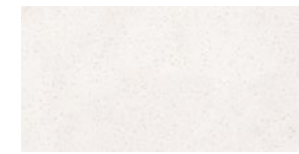
CLOUD WHITE



CASHMERE CARRARA



PAPYRUS



LONDON SKY



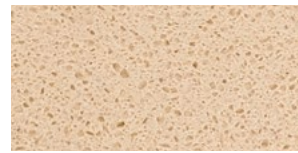
CALACATTA NATURA



CYGNUS PEARL



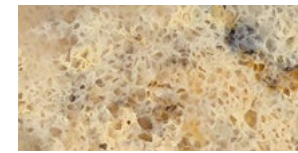
COARSE MARFIL



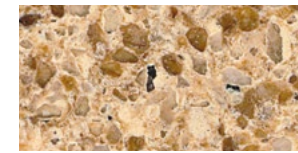
COARSE BOTTICINO



ASTRAL PEARL



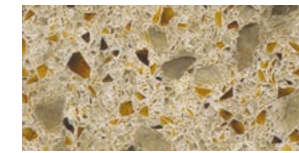
MOCHA LATTE



TOASTED ALMOND



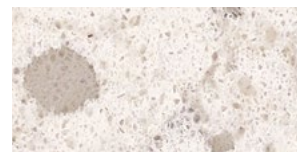
TOFFEE



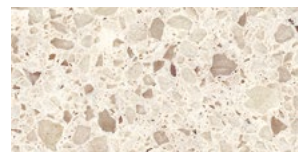
MOSSY GREEN



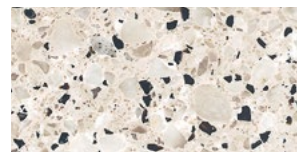
NÉVÉ



SNOWDRIFT



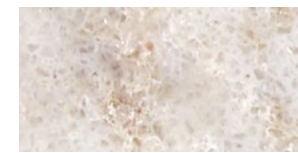
ANTIQUÉ PEARL



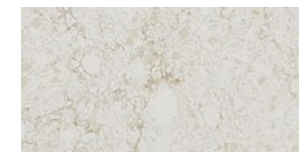
LUNAR PEARL



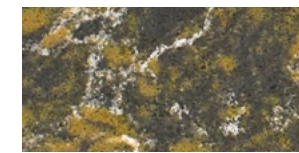
STRATUS WHITE



MARBLE MIST



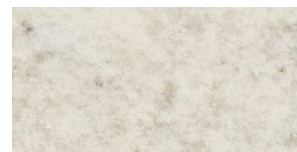
VENETIA CREAM



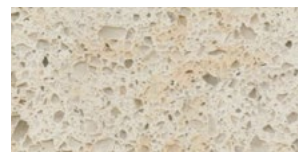
MOSSY OAK



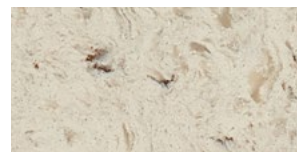
VALENTE PEARL



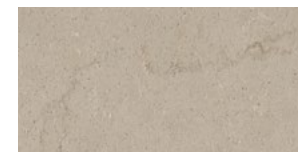
GRAY TUNDRA \*



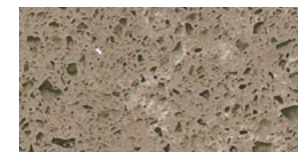
CARAWAY



PEARL STONE



QUARRY STONE \*



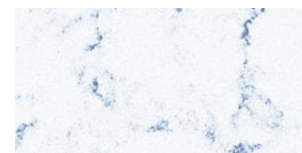
COARSE PEPPER



WILD RICE



EVERGREEN



BLUE CARRARA



VERSILIA GRIGIO



BIANCO DOLOMITE



NEBULA



DOVE GREY



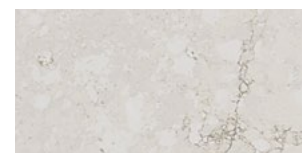
NERO SOAPSTONE \*



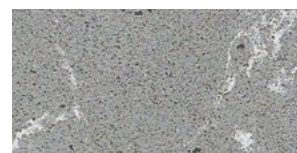
BOREALIS BLUE



INDIGO SWIRL



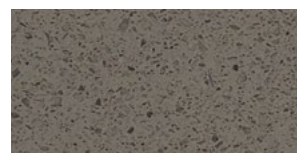
OCTAVIO



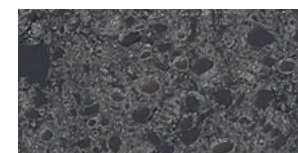
CONCRETE CARRARA



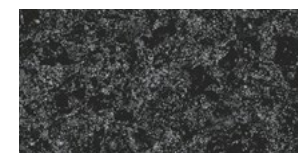
GRIGIO ALPI \*



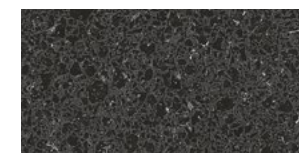
GRAPHITE



GRIGIONE



STORM GREY



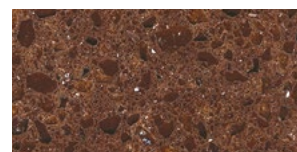
MYSTIC BLACK



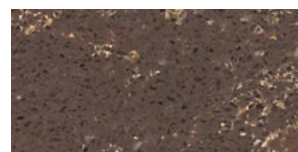
ONYX CARRARA



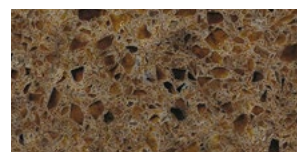
INDUS RED



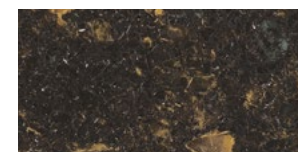
SADDLE BROWN



IMPERIAL



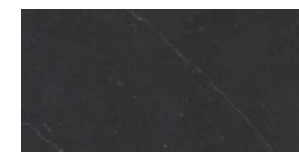
WARM TAUPE



SPACE BLACK



GALAXY BLACK



PORTORO



BLACK QUASAR

\* LEATHERED TEXTURE

CORIAN® QUARTZ - CONTACTS

**North America**

**Canada, United States:**

Consumers: 800-426-7426

Professionals: please contact your distributor representatives, or call 800-436-6072 for samples

[www.corianquartz.com](http://www.corianquartz.com)

Copyright © 2018 E. I. du Pont de Nemours and Company.

The Corian® Quartz Logo and Corian® are trademarks of E. I. du Pont de Nemours and Company or its affiliates.  
All rights reserved.


To know more about Corian® Design:  
[www.corian.com](http://www.corian.com)

 [Facebook.com/CorianDesign](https://www.facebook.com/CorianDesign)

 [Instagram.com/CorianDesign](https://www.instagram.com/CorianDesign)

 [Twitter.com/CorianDesign](https://www.twitter.com/CorianDesign)

 [Youtube.com/CorianDesign](https://www.youtube.com/CorianDesign)

 [Linkedin.com/company/corian-design](https://www.linkedin.com/company/corian-design)

  
CORIAN®  
DESIGN

  
Make Your Space™